

ASRockInd Technical Reference - Q&A

Question	I am not able to get DHCP leases from Intel I225-LM / I226-LM LAN (vPro supported). How can I configure the LAN port for DHCP Server use?
Release date	2023/10/30
Product	All model with Intel I225-LM / I226-LM LAN (vPro supported)
FAQ type	<input type="checkbox"/> Specification <input type="checkbox"/> OS & Driver <input checked="" type="checkbox"/> Application <input checked="" type="checkbox"/> BIOS <input type="checkbox"/> Others

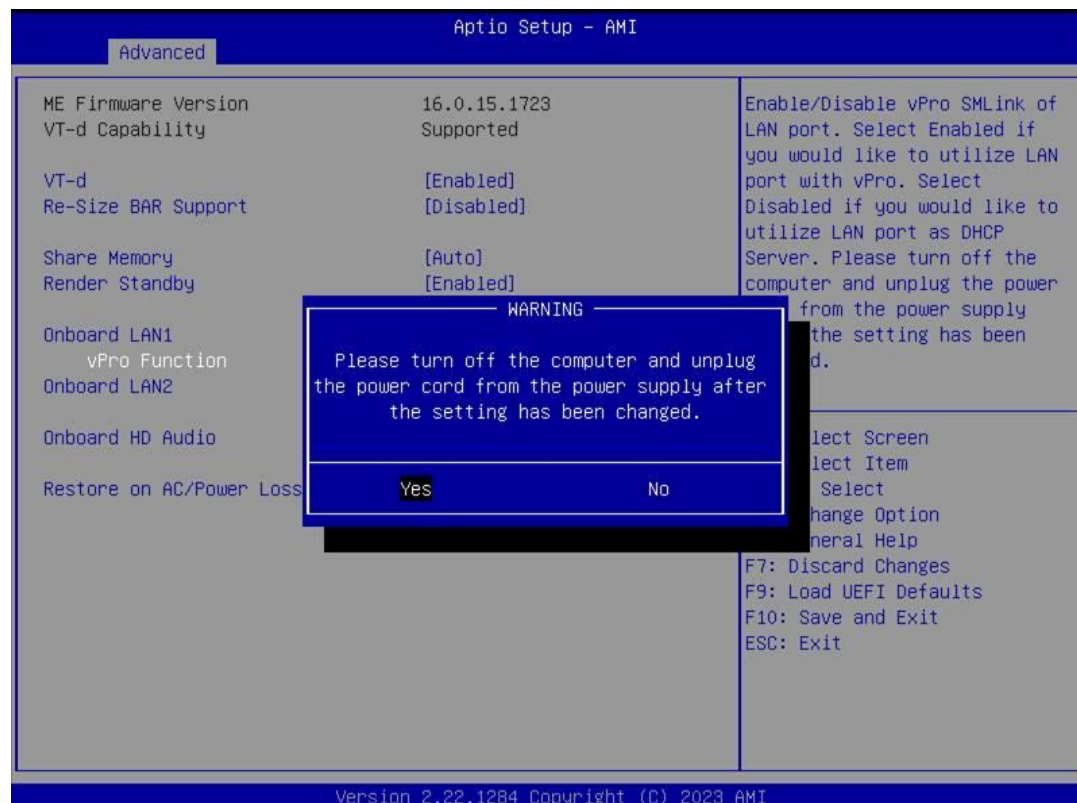
Answer:

Please refer the following steps to configure the BIOS settings for DHCP Server application with I225-LM / I226-LM LAN (vPro supported):

Step1. Press F2 or Del to enter the BIOS during boot up process

Step2. Navigate to Advanced > Chipset Configuration > Onboard LAN (vPro supported), then set “vPro Function” to [Disabled]

Step3. A message will remind you to power off after the settings has been changed. Please press Yes to confirm, then Press F10 to Save and Exit



Step4. Reboot into the BIOS to check if the settings has been changed.

Step5. Turn off the computer and unplug the power cord from the power supply.

Step6. Connect the power cord and boot up the system, the I225-LM / I226-LM LAN should now be able to work as DHCP Server.

Notice:

1. After the BIOS setting is configured, the system still requires additional software to setup DHCP Server
2. If you would like to revert the settings for vPro function, please also power off after the settings has been changed